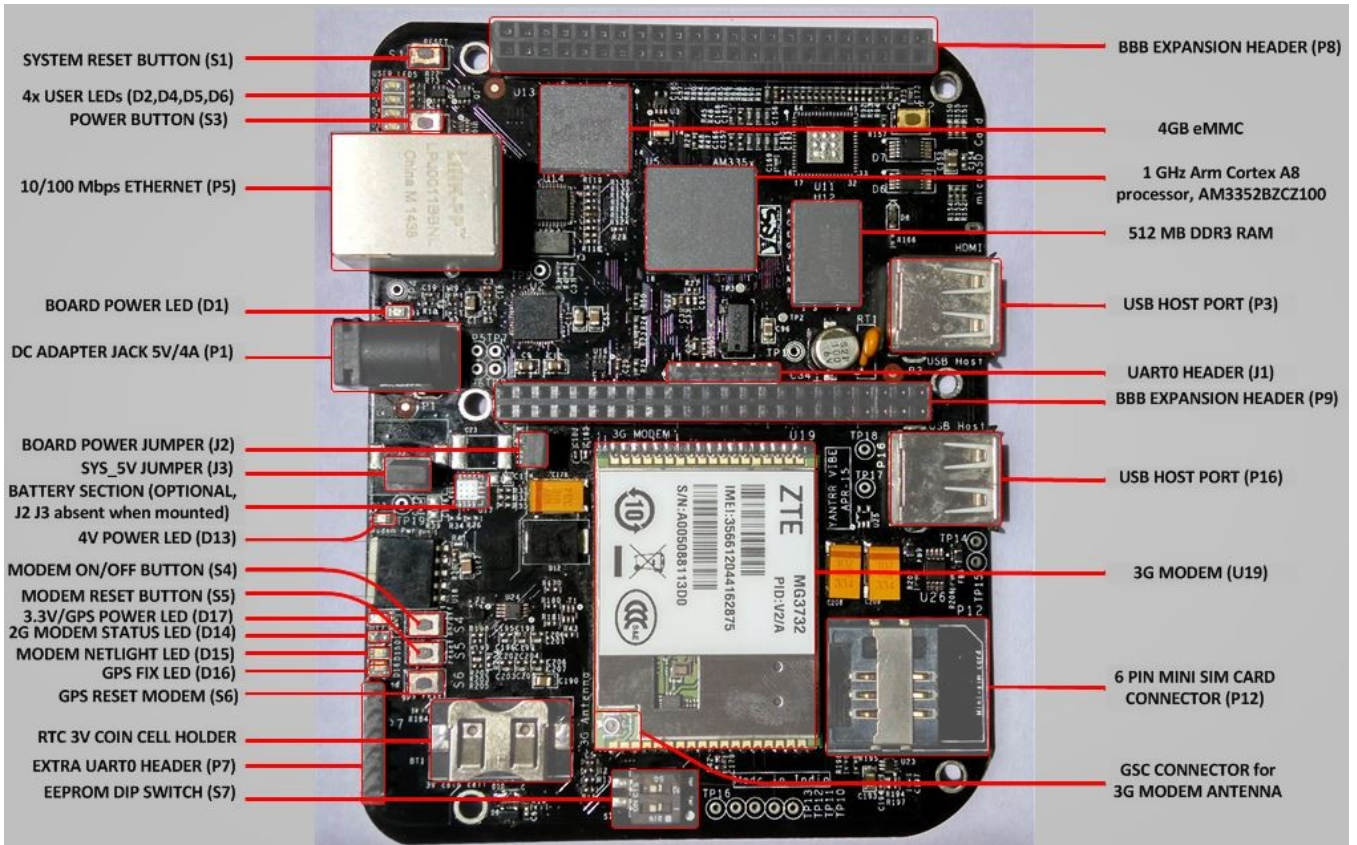
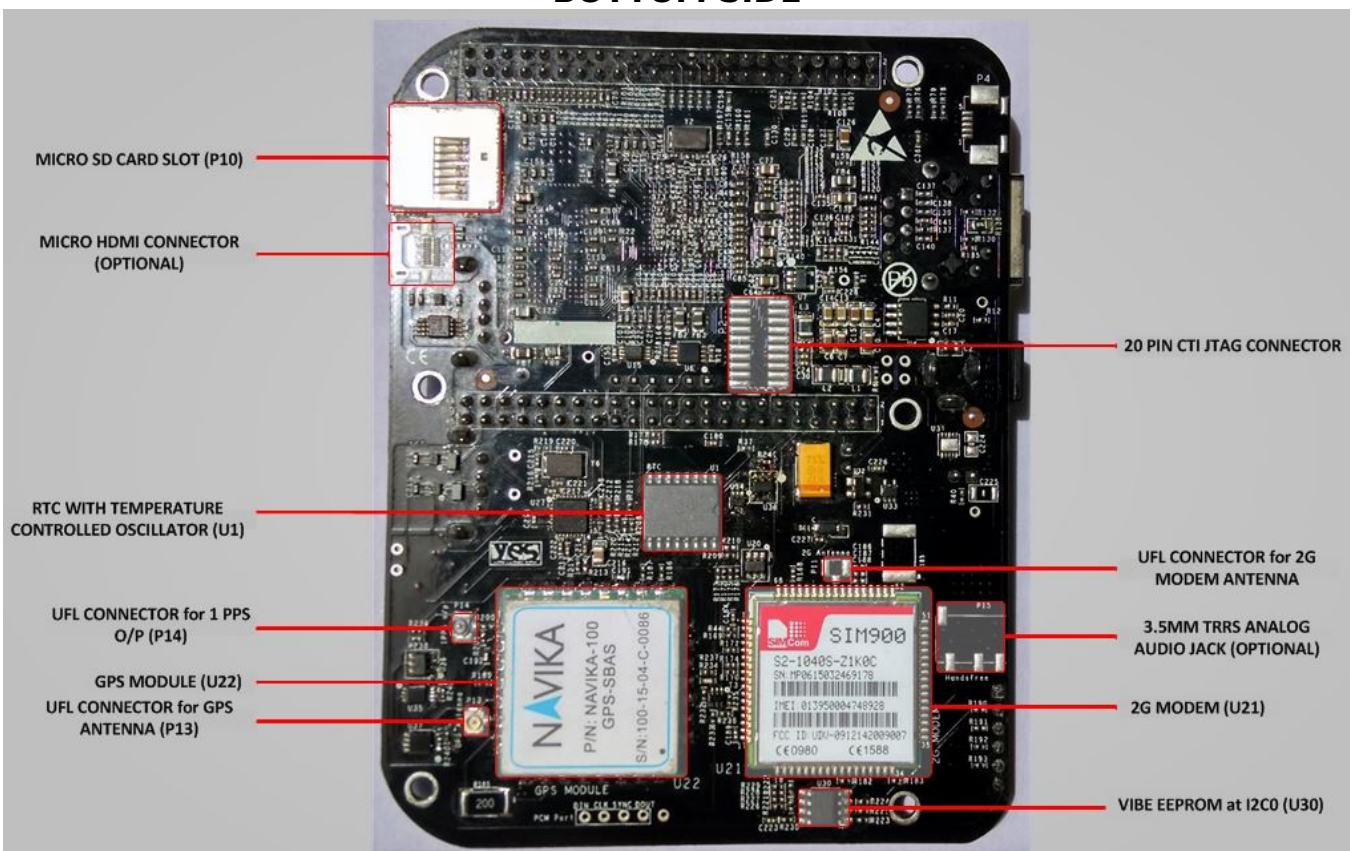


STARTUP GUIDE

TOP SIDE



BOTTOM SIDE



**BB Black
Compatible**

www.yantr.com



1. Instructions to use VIBE after unboxing :

1. Insert the Coin cell provided with VIBE in the coin cell holder to use the RTC.
2. Insert Mini-sim card in sim card slot, if Modem present.
3. Connect Antennas at respective connectors for 3G/2G and/or GPS.
4. Ssh options are available over Ethernet and UART0 Header , and HDMI if feature is present.
5. For using UART0 header for ssh, use a 3.3V UART to USB cable.
For using Ethernet, connect a Ethernet cable. IP address is 192.168.1.150 with Gateway 192.168.1.1
For using HDMI (when present), connect a micro-HDMI connector and a USB Keyboard.
USB host ports needs a device to be connected at bootup so that port stays active once it boots up. After that USB hotplug works irrespective any devices connected or not.
6. VIBE is shipped with eMMC pre-flashed with latest distribution of Debian Wheezy console. This image has all the kernel patches included and VIBE configured.
7. Ensuring that Jumpers J2 and J3 are in place (ignore if battery feature is present) and EEPROM address set at 0x54 using the dip switch S7, use the adapter provided with the box to power up VIBE.
8. Username for root login is '*root*' and password is '*root*'. For user login, username is '*debian*' and password is '*temppwd*'.

2. For documentation and software updates, please visit:

VIBE fully supports Debian Wheezy.

For Debian Wheezy support available publicly, please go to:

<http://elinux.org/BeagleBoardDebian>

The software needs some additional setup for using VIBE and its features like RTC, USB host ports, Ethernet Reset using GPIO, 3G modem, GPS .

Yantrr support including downloadable images of Debian Wheezy and Angstrom, Application notes, Hardware and Software guides and FAQs are available here:

https://www.yantrr.com/wiki/Main_Page



BB Black
Compatible

www.yantrr.com

